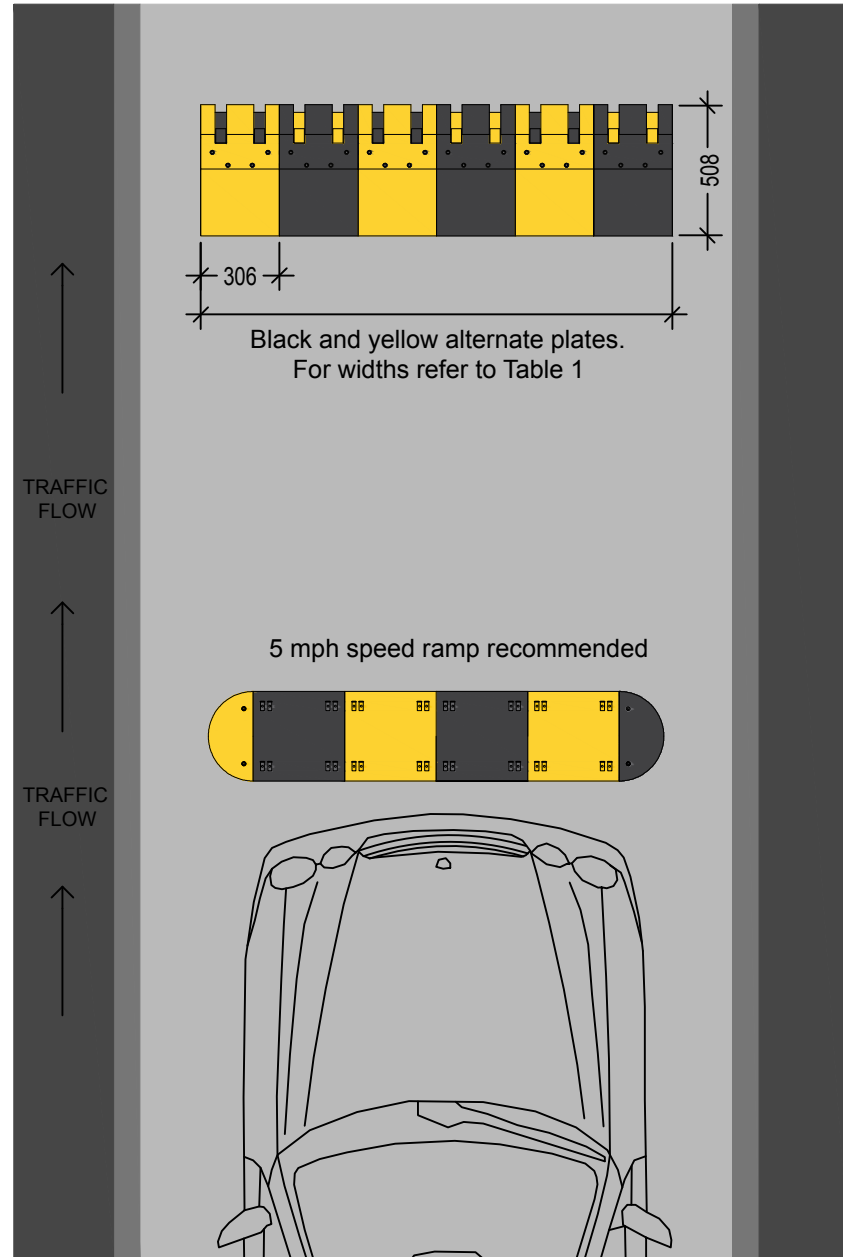
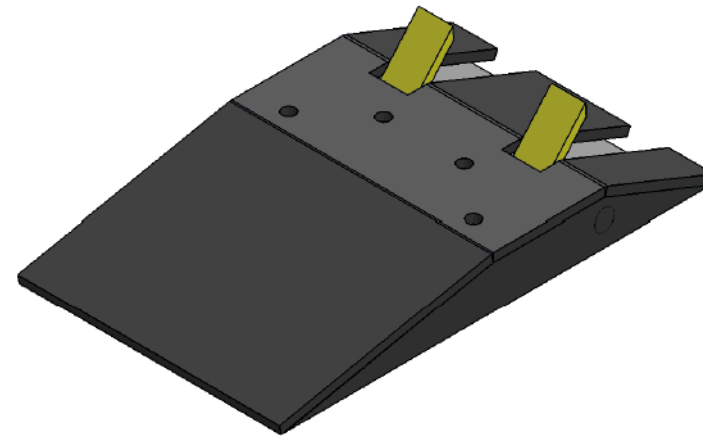


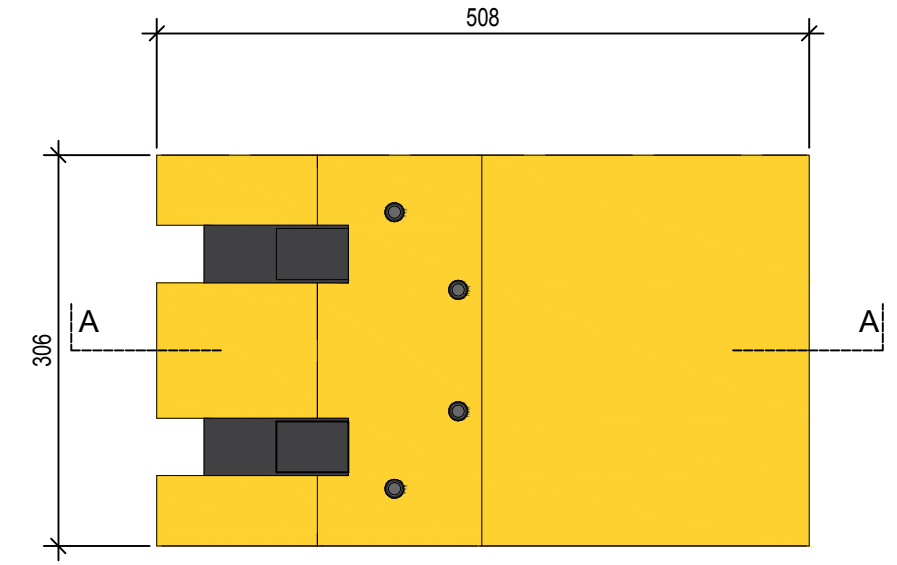
HGV SURFACE MOUNTED TRAFFIC CONTROL PLATES



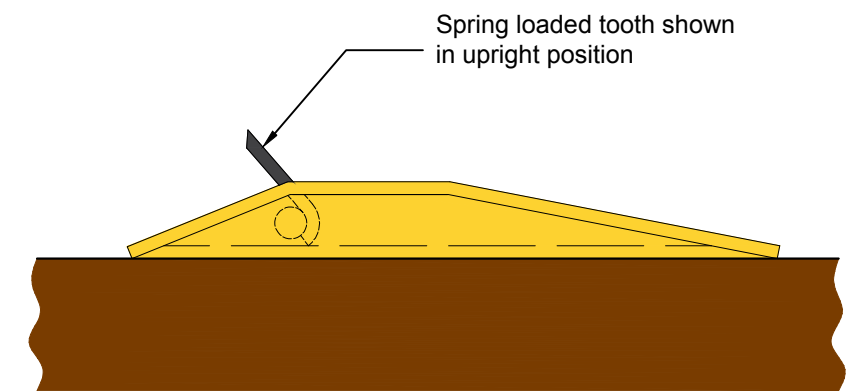
Plan view of road



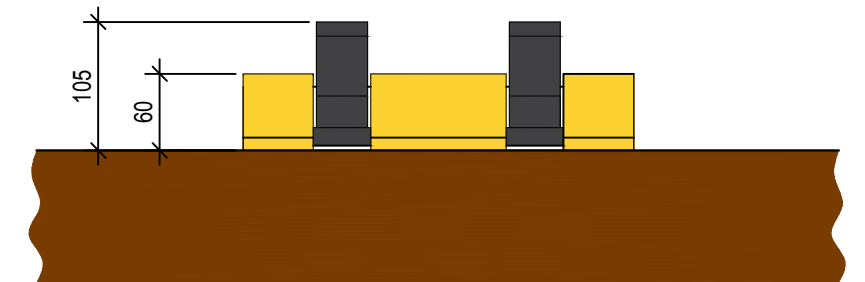
- Suitable for both cars & HGV's
- Heavy Duty Chequer Plate, designed for high traffic areas
- Alternating black and yellow sections for added visibility
- Modular design to build ramp width as required
- Sophisticated in-built counter balance and heavy duty spring action
- Surface mounted – no need for drainage channel
- 8 no fixing holes per plate
- Quick and easy to install



Plan



Section AA



Elevation

Road width metric (mm)	Imperial (feet)	No. of plates
2000	6.56'	5
2500	8.20'	7
3000	9.84'	8
3500	11.48'	10
4000	13.12'	12
4500	14.76'	13
5000	16.40'	15
5500	18.05'	17
6000	19.69'	18

Table 1. Widths to plate number

FLOWPLATE	Flow Plates Ltd Address: Unit 28D, Nuralite Industrial Estate Canal Road, Higham, ME3 7HX TEL: 0333 433 0468 Email: sales@flowplates.co.uk		Title: HGV TRAFFIC CONTROL PLATES	
	Drawn by: FS	Drawing no: NMFP 01	Revision: 1	
	Date: 18.09.2017			
	Scale: Refer to dimensions			